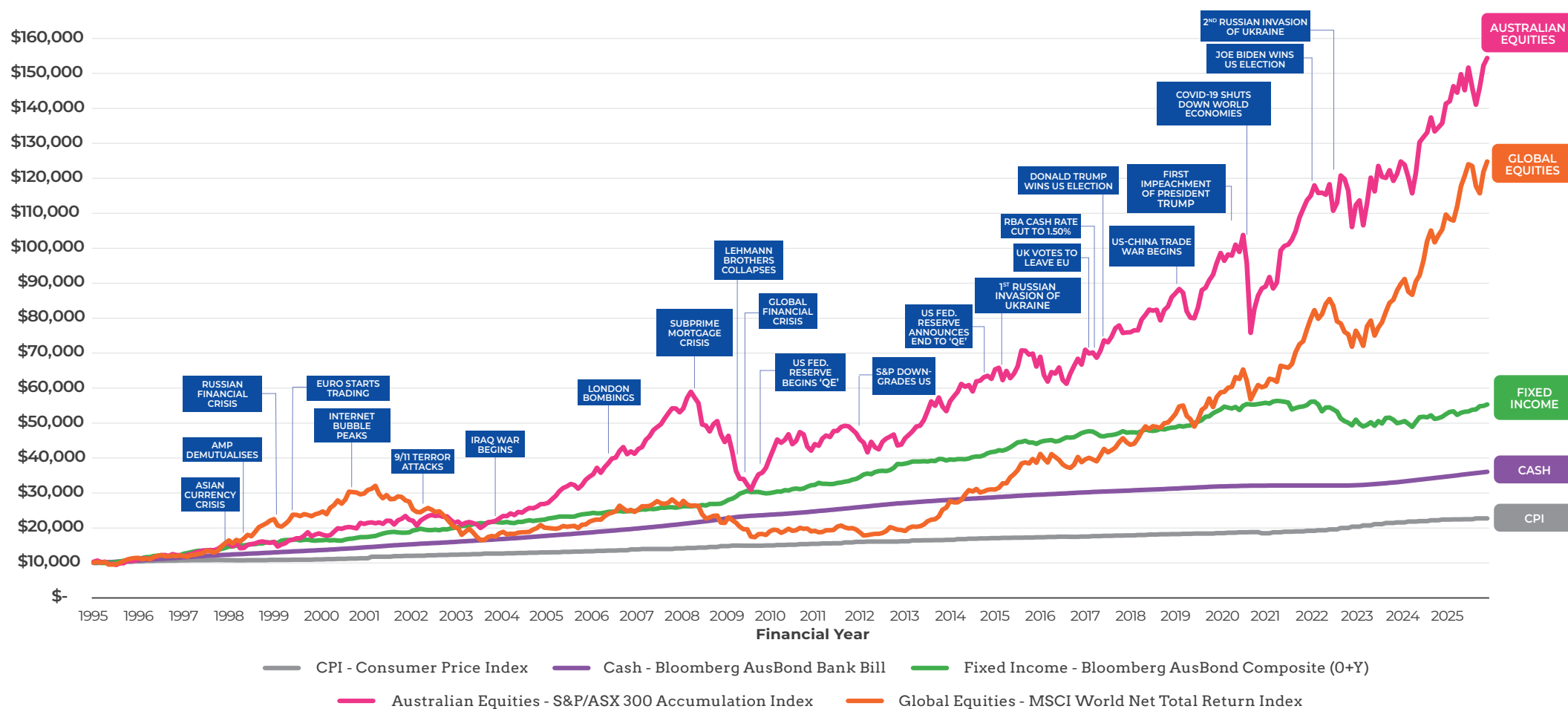


The value of long-term investing

The value of \$10,000 invested since 1994[^]



Source: FactSet and Perpetual Asset Management | Past performance is not indicative of future performance. | [^]Assumes reinvestment of all dividends and income.

More information

1800 022 033
investments@perpetual.com.au
perpetual.com.au



PENDAL



BARROW HANLEY
GLOBAL INVESTORS



Regnan



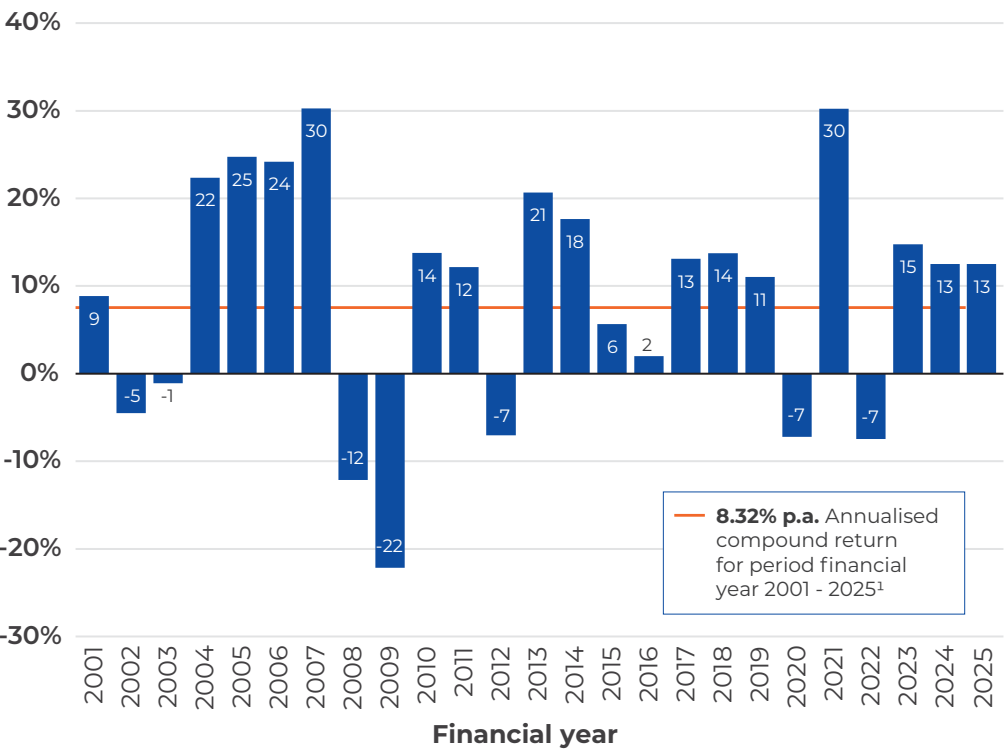
This information has been prepared by Perpetual Investment Management Limited (PIML) ABN 18 000 866 535. It is general information only and is not intended to provide you with financial advice or take into account your objectives, financial situation or needs. You should consider, with a financial adviser, whether the information is suitable for your circumstances. To the extent permitted by law, no liability is accepted for any loss or damage as a result of any reliance on this information. No company in the Perpetual Group guarantees the performance of any fund or the return of an investor's capital (Perpetual Group means Perpetual Limited ABN 86 000 431 827 and its subsidiaries). This document may contain information contributed or prepared by third parties. Any information contributed or prepared by third parties is believed to be accurate as at the time of compilation and is being provided in good faith without independent verification. PIML does not warrant the accuracy or completeness of any information provided by a third party. 3272_0725

Australian & international sharemarkets

Annual movements as at June 2025

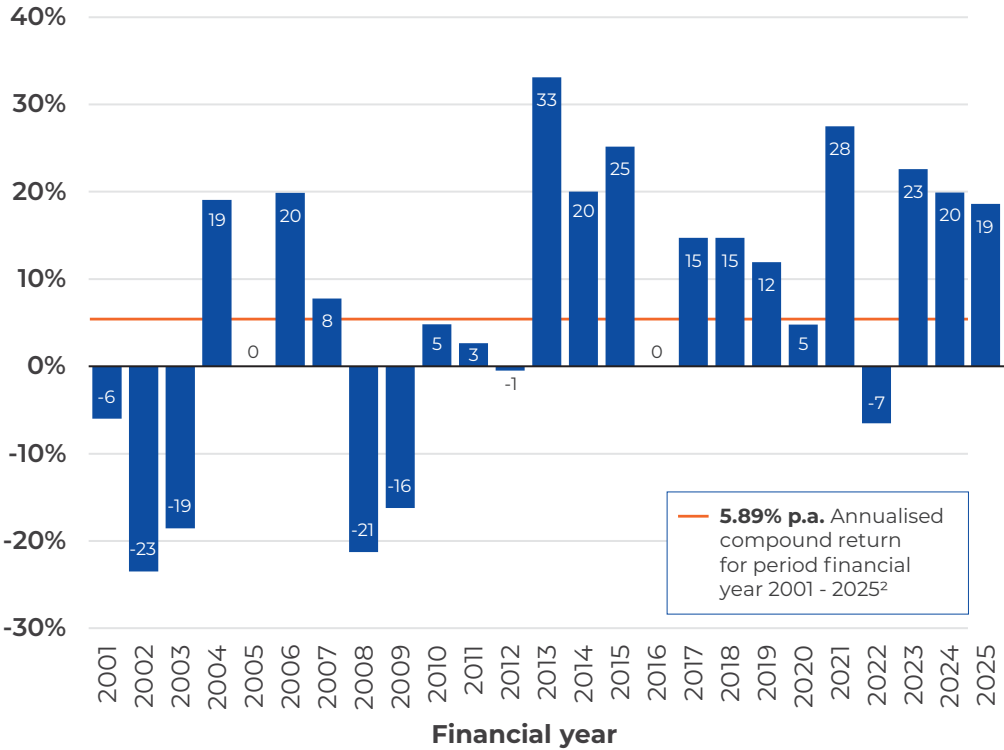
Australian sharemarket

8.32% p.a. annualised compound return since 2001¹



International sharemarket

5.89% p.a. annualised compound return since 2001²



Important information: Source: FactSet. | 1. Annual returns for the period from COB 30/06/2000 to 30/06/2025 as measured by the S&P/ASX All Ordinaries Accumulation Index. 2. Annual returns for the period from COB 30/06/2000 to 30/06/2025 as measured by the MSCI World ex Australia Net Total Return Index. | *Financial Year to Date, as at 30/06/2025 | Past performance is not indicative of future performance.

More information

1800 022 033
investments@perpetual.com.au
perpetual.com.au



PENDAL



BARROW HANLEY
GLOBAL INVESTORS



Regnan



T | S | W

This information has been prepared by Perpetual Investment Management Limited (PIML) ABN 18 000 866 535. It is general information only and is not intended to provide you with financial advice or take into account your objectives, financial situation or needs. You should consider, with a financial adviser, whether the information is suitable for your circumstances. To the extent permitted by law, no liability is accepted for any loss or damage as a result of any reliance on this information. No company in the Perpetual Group guarantees the performance of any fund or the return of an investor's capital (Perpetual Group means Perpetual Limited ABN 86 000 431 827 and its subsidiaries). This document may contain information contributed or prepared by third parties. Any information contributed or prepared by third parties is believed to be accurate as at the time of compilation and is being provided in good faith without independent verification. PIML does not warrant the accuracy or completeness of any information provided by a third party. 3272_0725